

Summit Manor®

VINYL SIDING

A CLASSIC LOOK THAT
WILL LAST A LIFETIME

 **NORANDEX™**
VINYL SIDING, SOFFIT & ACCESSORIES



THE LOOK OF WOOD, THE VALUE OF VINYL

FEATURES AND BENEFITS



.040" Panel thickness with a low gloss woodgrain pattern

A 1/2" panel projection provides rigidity and casts deep, appealing shadow lines



NailRIGHT
SIDING INSTALLATION SYSTEM

Features the Norandex proprietary NailRIGHT® Siding Installation System for a safe, secure installation



COLORHOLD
Lifetime Fade Protection

ColorHold is a highly-durable capstock that resists fading and discoloring and is backed by a Limited Lifetime Transferable Warranty* including Lifetime Fade Protection

*Visit www.norandex.com to view warranty details

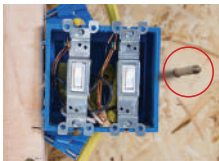


Matching and contrasting soffit, accessories, shakes and shingles available to give your home a one-of-a-kind look

NailRIGHT
SIDING INSTALLATION SYSTEM

FOR A SAFE SECURE INSTALLATION

AVOID:



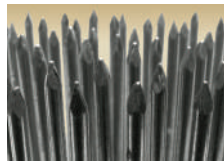
HIDDEN DANGERS

Nails that miss their mark can be potentially hazardous to items, like wiring and plumbing, located in the cavities between studs.



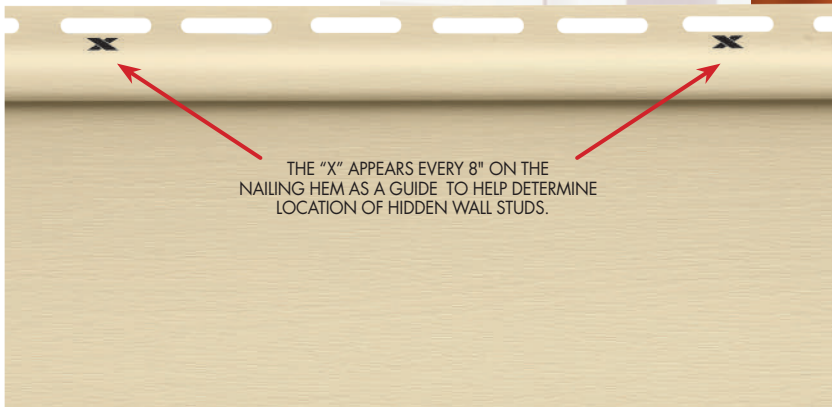
BLOW-OFF

NailRIGHT helps guide the installer to the studs for an installation that's strong, secure and resistant to blow offs.



UNNECESSARY NAIL USAGE

NailRIGHT assures the proper amount of nails are used, saving your home from unnecessary hammer hits.



- Make Summit Manor Vinyl Siding the choice for the life of your home.**
- Virtually maintenance free. Save time and money on upkeep costs.
 - Because it's solid vinyl, it won't blister, crack, flake, peel or rot like wood exteriors.
 - A sound investment that can help increase the resale value of your home.

- THREE DISTINCTIVE PROFILES:**
- Double 4" & 5" Clapboard
 - Double 4-1/2" Dutchlap

16 BEAUTIFUL COLORS

WHITE	WHEAT
LINEN	SANDSTONE
BEIGE	MOCHA PREMIUM
TAN	CACTUS
CHAMPAGNE	SILVER
SIERRA PREMIUM	DOVE GRAY PREMIUM
CREAM	GRANITE PREMIUM
YELLOW	WEDGEWOOD PREMIUM

Colors are mechanically reproduced. For color accuracy, please see actual product sample.

NORANDEX
Summit Manor®
VINYL SIDING



COMPLEMENT YOUR NEW SIDING WITH OTHER QUALITY EXTERIOR PRODUCTS



Your home deserves the best. That's why, in addition to siding, we offer other top quality products to beautify and protect your home. Whether it's entry doors, energy-efficient windows, soffit, trim, or metals, you can rest comfortably knowing you've finished your home with performance products that are among the best the industry has to offer.



VINYL SIDING, SOFFIT & ACCESSORIES

1-800-528-0942

www.norandex.com